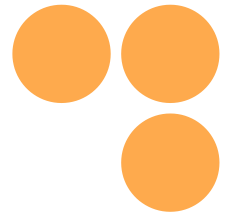


twinning towards
research excellence
in evidence-based planning
and urban design



Capacity Building: Researchers' Training Needs - Stakeholders Engagement Needs

Society and Urban Form (SURF) Research Lab, Department of Architecture, University of Cyprus

‘Lessons Learned’: Ανασκόπηση και Συμπεράσματα μεταξύ Έργων Twinning του Πανεπιστημίου
Κύπρου & της Υπηρεσίας Έρευνας

Πανεπιστήμιο Κύπρου, 11 Δεκεμβρίου 2025



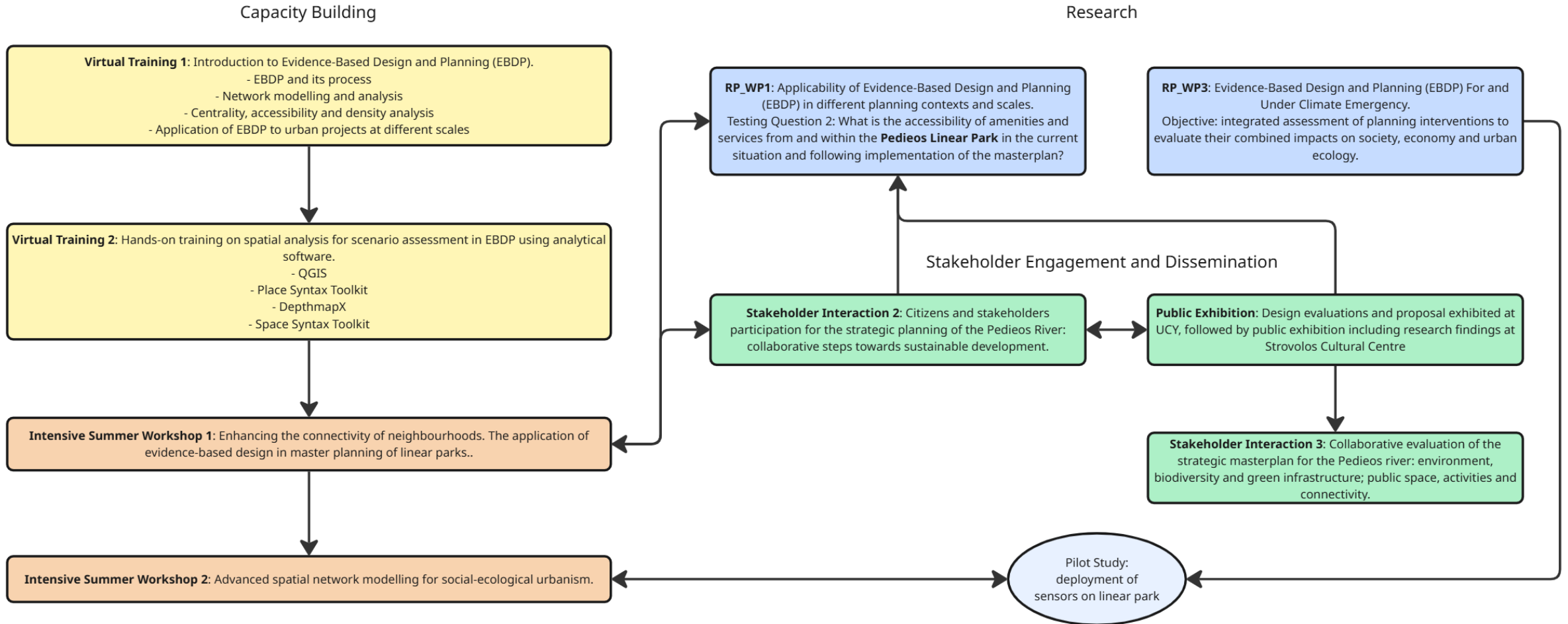
This project has received funding from the European Union's Horizon
Europe Research and Innovation Programme under Grant Agreement
No. 101078890



This project has received funding from the UK Research and Innovation (UKRI)
under the UK government's Horizon Europe funding guarantee under grant
numbers 10052856 and 10050784.

RELATIONSHIP
BETWEEN
CAPACITY BUILDING
AND
STAKEHOLDER
ENGAGEMENT

Month	CSA Actions of TWIN2EXPAND
M4	Preparatory Virtual Training (online)
M6-M8	1 st Industry Internship
M9	1 st Stakeholders Interaction: definition of expectations, targets, prospects for collaboration
M10	1 st Research Management Training
M10-M12	1 st Long-Term Training Placement (PhD students, ESRs) – modules attended by students to be decided in M6.
M11	1 st Staff exchange; combined with training – topics decided in M8
M16	Preparatory Virtual Training (online)
M18-M20	2 nd Industry Internship
M19	2 nd Stakeholder Interaction: networking initiative for promoting implementation of EBDP by industry and planning authorities, and R&I collaboration
M19	1 st Intensive Summer Workshop; including training and project research activities – topics to be decided M15
M22	2 nd Research Management Training
M22-M24	1 st Long-Term Training Placement (PhD students, ESRs) – modules attended by students to be decided in M15.
M23	1 st Staff exchange; combined with training – topics decided in M8
M30	3 rd Stakeholder Interaction: networking event to establish the basis for exploitation of project results.
M30	3 rd Intensive Summer Workshop; including training and project research activities – topics to be decided M27
M30-M32	3 rd Industry Internship
M34	3 rd Staff exchange; combined with training – topics decided in M29



CAPACITY BUILDING AND TRAINING

Challenges of post-occupancy evaluation in the built environment

My research focused on both understanding the factors influencing pedestrian movement and...

Mar 26, 2024  1



Space Syntax, in short.

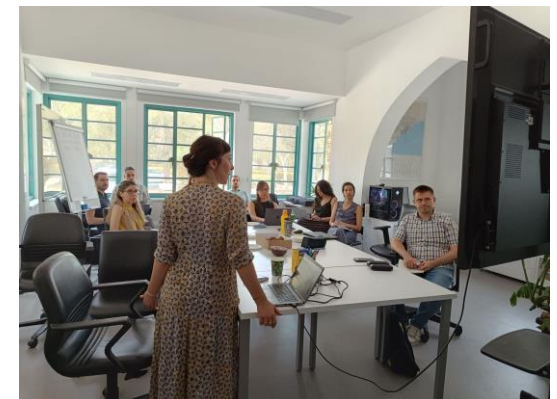
Throughout my time at UCL, space syntax stood out as one of the most reliable methods to inform the proces...

Feb 2, 2024  37  1



Emerging needs

- Impact in EU-Funded Projects and exploitation.
- Advanced GIS (ArcGIS)
- Stakeholder Engagement (Structured Democratic Dialogue)
- Ethics and methods of qualitative research
- Science communication
- Thematic text analysis
- Research integrity
- Correlational analysis
- Data science (visuals / AI for geospatial analysis)



STAKEHOLDER ENGAGEMENT

KPIs related to stakeholder engagement

- Participation in practice / planning interventions ≥ 2 **(0)**
- Policy briefings > 2 **(0)**
- Advocacy meetings with government authorities > 3 **(1)**
- Advocacy meeting with professional chambers > 3 **(0)**
- Participation in practice / planning interventions ≥ 2 **(0)**
- Policy briefings > 2 **(0)**
- Advocacy meetings with government authorities > 3 **(1)**
- Advocacy meeting with professional chambers > 3 **(0)**
- Formal consulting role in planning policy development ≥ 2 **(0)**
- Government 'White paper' on EBDP = 1
- Action plan to embed EBDP in planning policy ≥ 1



Research question	Description	Scale
R1	Assessing the viability of <specific locations> based on population density that they will serve and their accessibility by different transport modes.	Urban
R2	What is the accessibility of amenities and services from and within Pedieos linear park [existing +masterplan].	Project
R3	What is the accessibility of the masterplan's waterfront / amenities and services from the waterfront.	Project
R4	What is the accessibility of green public spaces in relation to tree coverage [Nicosia].	Urban
R5	What is the accessibility of intercity bus stops + rural bus stops in relation to key services in the area between Larnaca and Nicosia.	Territorial
R6	What is the accessibility of heritage and cultural sites from cycling routes.	National

Outreach to stakeholders and communities

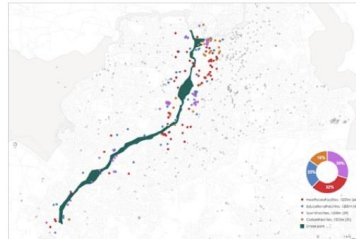


Figure 15: Existing situation, Accessibility to amenities from the linear park (from the 67 existing entrances)

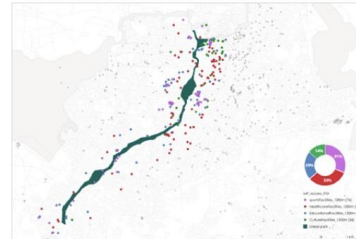


Figure 16: Masterplan, Accessibility to amenities from the linear park (from the 84 proposed entrances)

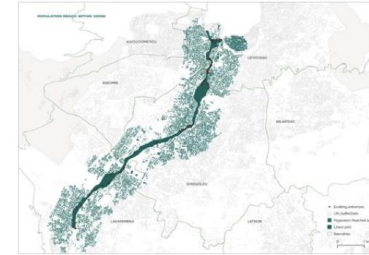


Figure 9: Existing situation, Population reach from the 67 existing park entrances within 1200-meter walking distance

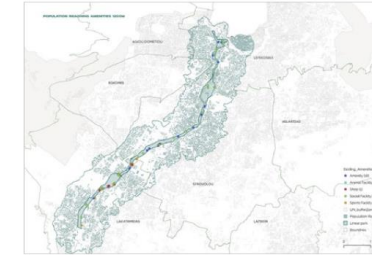


Figure 10: Existing situation, Accessibility to amenities in the linear park, within 1200-meter walking distance

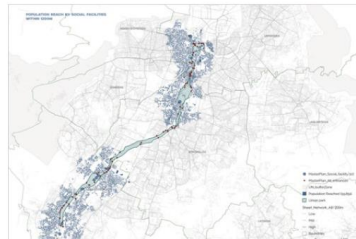


Figure 17: Masterplan, Accessibility to amenities within the linear park - Social Facilities Distribution



Figure 18: Masterplan, Accessibility to amenities within the linear park - Ecological Facilities Distribution

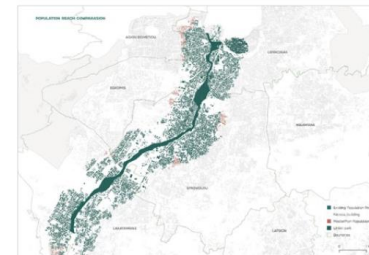


Figure 11: Masterplan, Population reach from the 84 proposed (+17) park entrances within 1200-meter walking distance

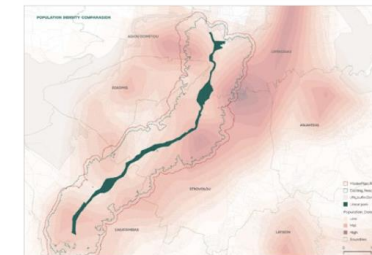


Figure 12: Masterplan, Highest population density areas, show the least improvement in accessibility.

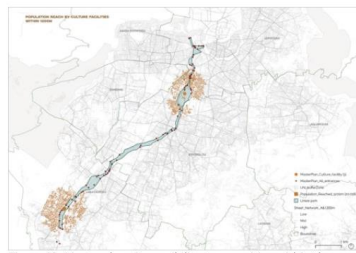


Figure 19: Masterplan, Accessibility to amenities within the linear park - Cultural Facilities Distribution

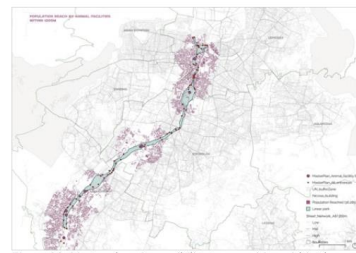


Figure 20: Masterplan, Accessibility to amenities within the linear park - Animal Facilities Distribution

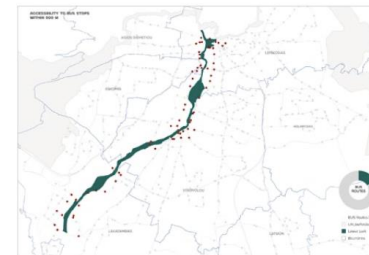


Figure 13: Masterplan, Bus stops that are within 500-meter walking from any of the 84 entrances

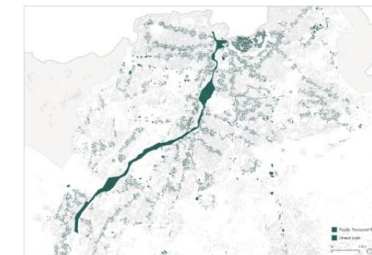
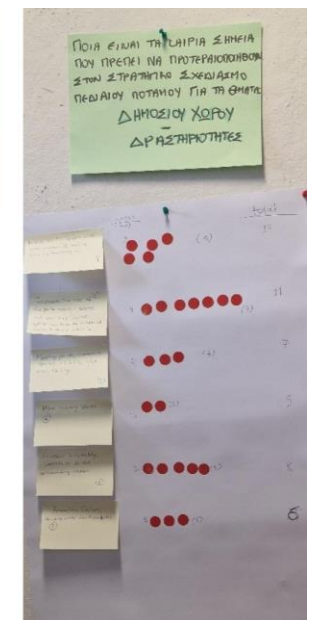
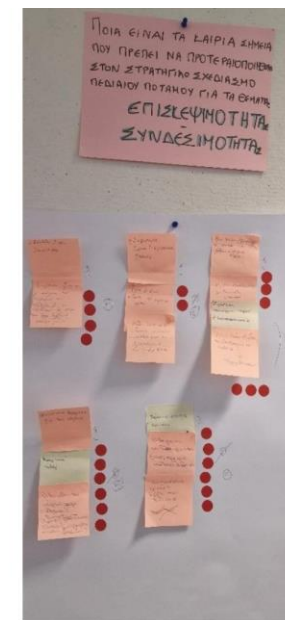
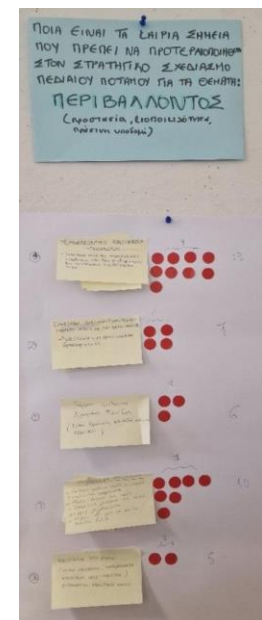


Figure 14: Masterplan, The population that can reach a bus stop within 200 meters and then access the park within 500 meters of another stop.

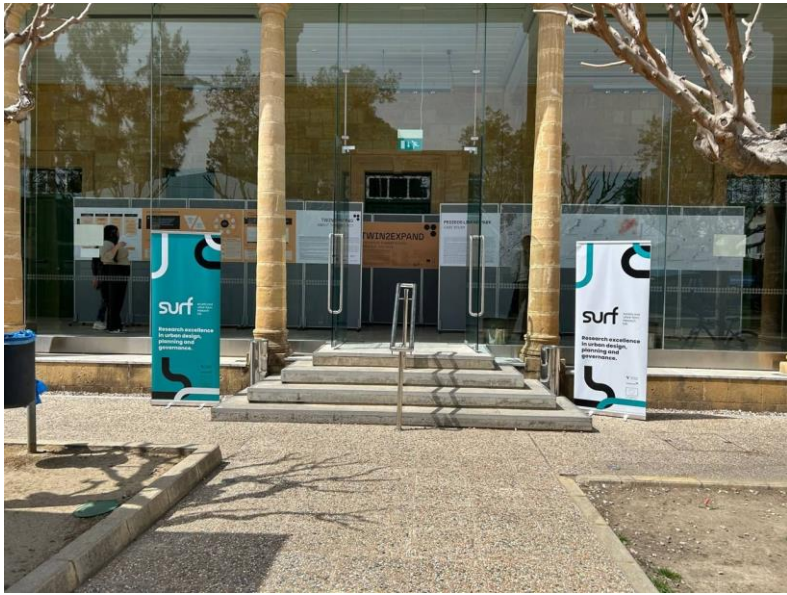


1st Stakeholder Focus Group at UCY July 3, 2024

Citizens and Stakeholders Participation for the Strategic Planning of the Pedieos River:
Collaborative Steps Towards Sustainable Development

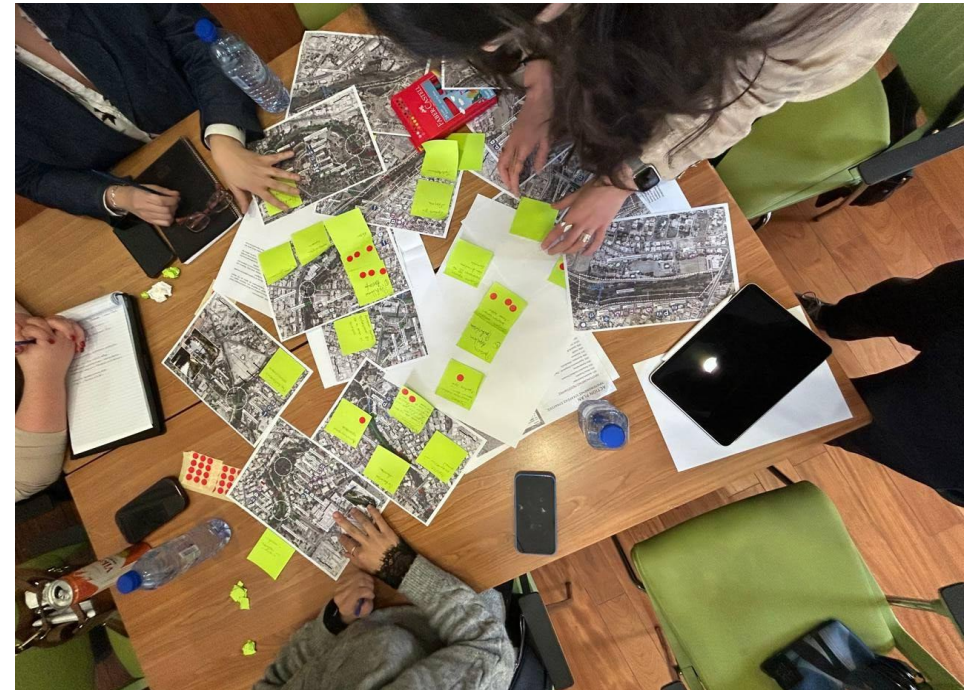


Outreach to stakeholders and communities



2nd Stakeholder Focus Group at Strovolos March 26, 2025

Collaborative Stakeholders Focus group to evaluate the Strategic Master Plan for the Pedieos River.



Χαρτογράφηση Πεδιαίου Ποταμού

Για την προσβασιμότητα περιοχών για άτομα με αναπηρίες

 **Σάββατο 18/10/2025**
09:00 π.μ. – 12:30 μ.μ.

 **Πολιτιστικό Κέντρο Στροβόλου,
Πάρκο Πεδιαίου (Περιοχή Δήμου
Στροβόλου)**

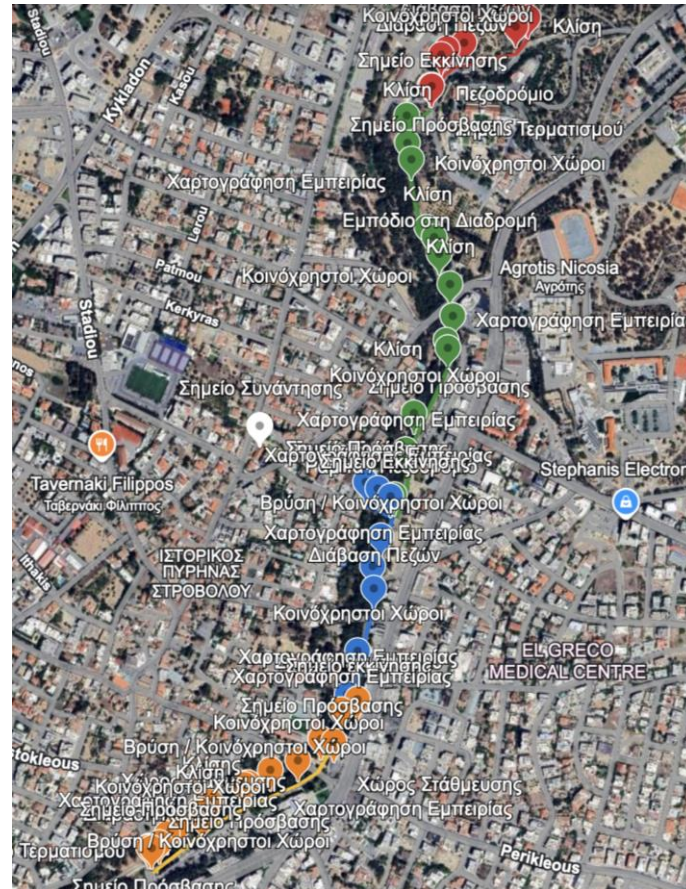
Υποστηρίζεται από:

  **Funded by
the European Union**

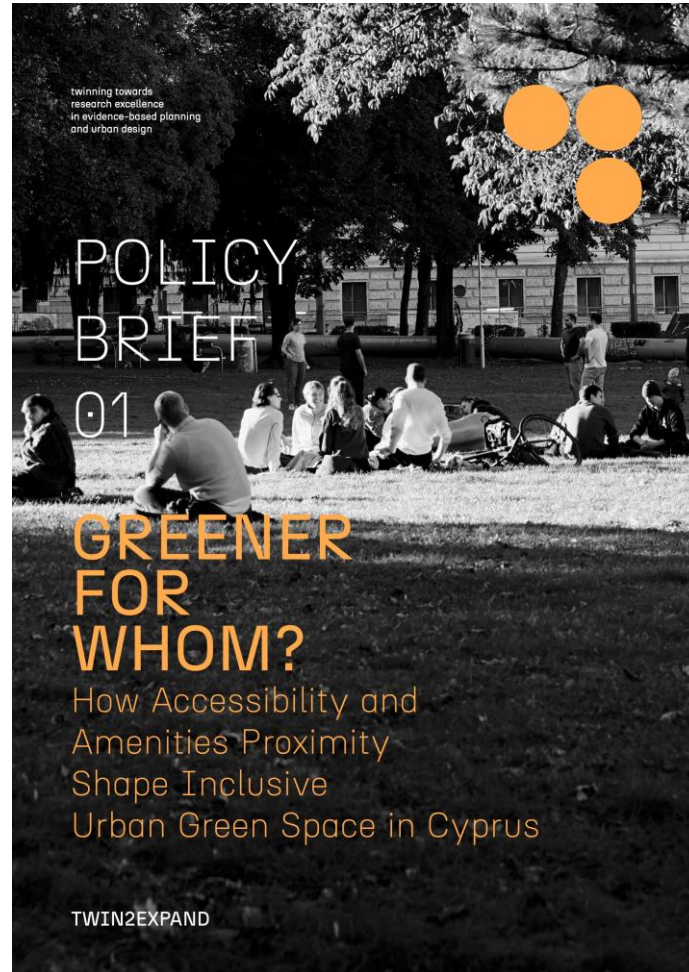


Accessibility Mapping activity for the Pedieos Linear Park With civic society groups and the community October 18, 2025



Outreach to stakeholders and communities

Policy Briefs



Discussion Panels

TWIN2EXPAND 

PANEL DISCUSSION:
BUILDING AN OPEN URBAN DATA FUTURE: THE CASE OF CYPRUS.

PANELISTS:
MARINA NEOPHYTOU (UCY)
MARIOS M. POLYCARPOU (UCY)
PAVLOS LOIZOU (ASK WIRE)
SIMONS GARETH (UCL)
VALENTINA MARIN (SPACE SYNTAX)

MODERATOR:
surf 

Cyprus Forum 2025,
2nd October, 12:00-13:00
Nicosia Old Town Hall, Cornaro Room
Save your seat: 2025.cyprusforum.cy

 **Cyprus Forum.**
Policymaking Redefined



TWIN2EXPAND 

PANEL DISCUSSION:
GREEN DEAL IN PRACTICE: CYPRUS IMPLEMENTATION AGENDA.

PANELISTS:
CHARALAMPOS THEOPEMPTOU (CY PARLIAMENT)
ELENI STYLIANOPOULOU (PRESIDENCY CY)
TADASHI MATSUMOTO (OECD)
NICOLETTA NEOPHYTOU (PWC)
SAVVAS VLACHOS (CEA CY)

MODERATOR:
surf 

Cyprus Forum 2025,
2nd October, 14:00-15:00
Nicosia Old Town Hall, Cornaro Room
Save your seat: 2025.cyprusforum.cy

 **Cyprus Forum.**
Policymaking Redefined



Outreach to stakeholders and communities

Methodology

