

# Pedieos Linear Park

Focus group

Strovolo Cultural Centre, 26 March 2025



This project has received funding from the European Union's Horizon Europe Research and Innovation Programme under Grant Agreement No. 101078890



UK Research  
and Innovation

This project has received funding from the UK Research and Innovation (UKRI) under the UK government's Horizon Europe funding guarantee under grant numbers 10052856 and 10050784.

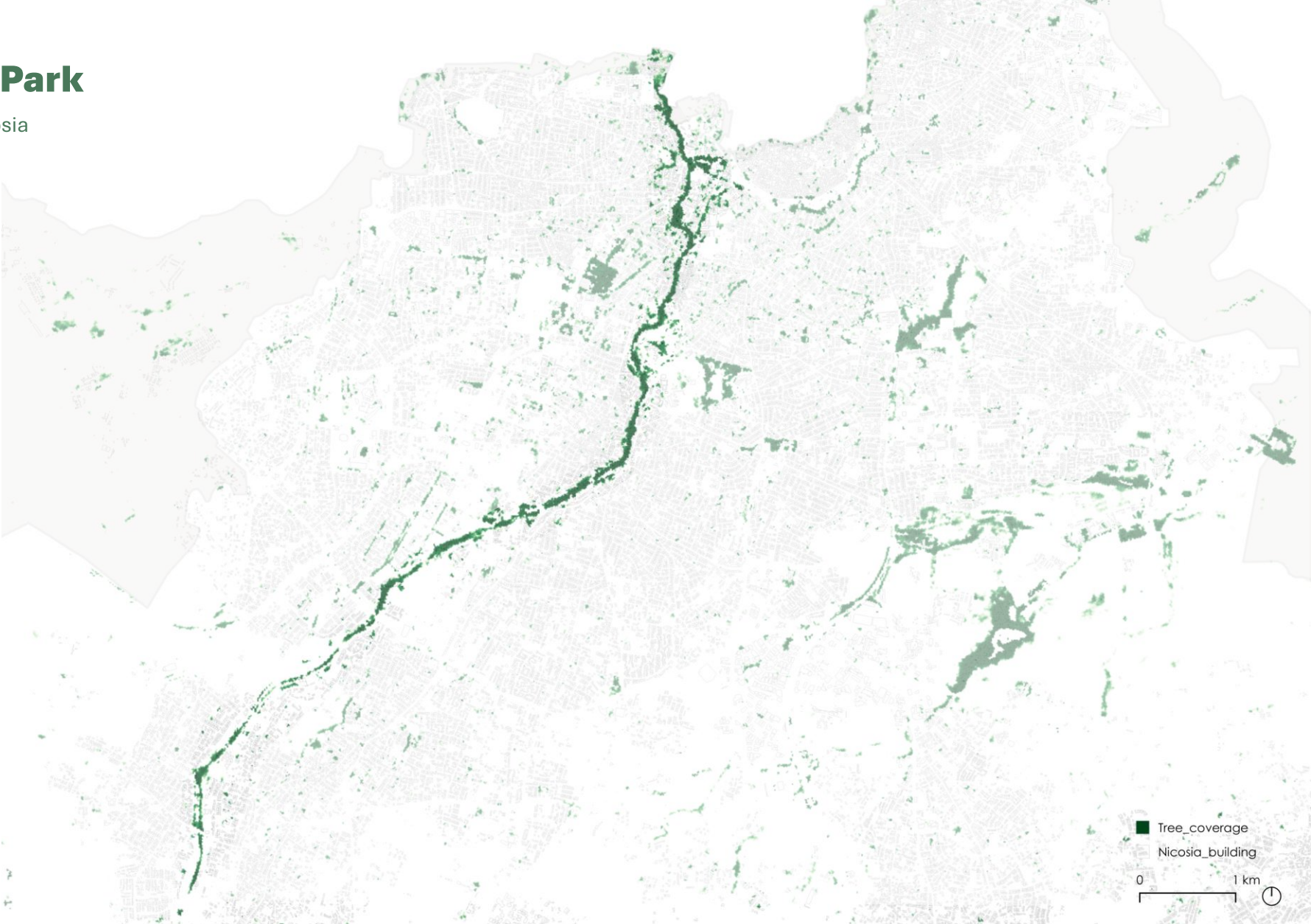


University  
of Cyprus



# Pedieos Linear Park

Longest green coverage in Nicosia



## Key points from Pervious meeting

The focus group demonstrated **high engagement** from participants, generating **43 ideas** that were later refined through voting. The discussions emphasised the need for **a well-connected, environmentally sustainable, and community-friendly** space along the Pedieos River.

### Key takeaways:

- Accessibility and safety improvements are crucial.
- The environmental impact should be minimized through sustainable planning.
- More public activities and events should be introduced to enhance engagement.

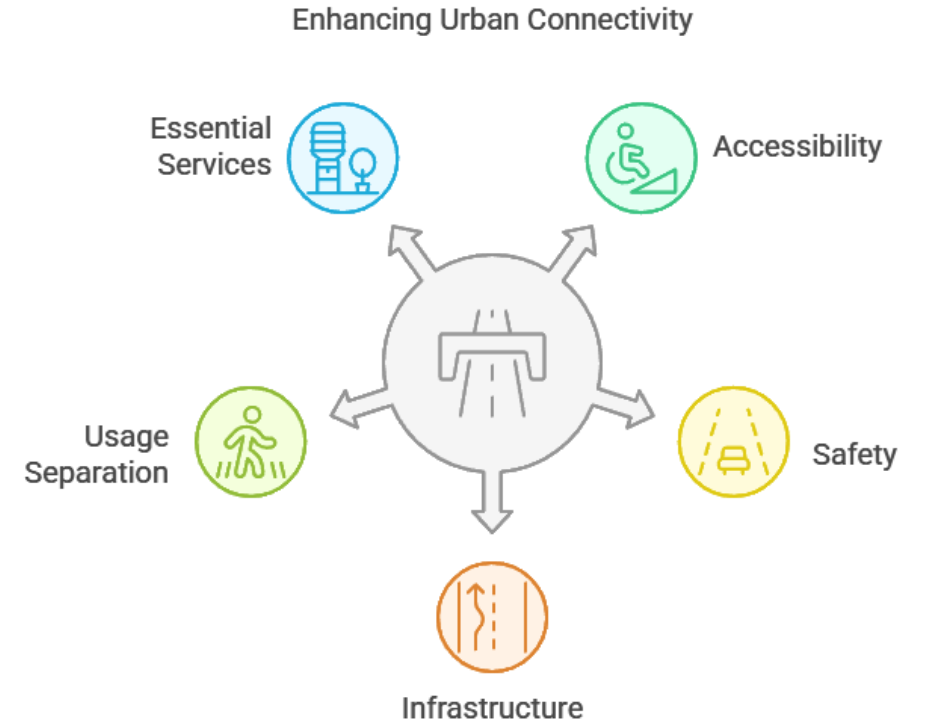


## Key points from previous meeting

### Key Results

## Urban Connectivity

- **Improving accessibility and connectivity** (e.g., smooth pedestrian pathways, and ramps for people with disabilities).
- **Ensuring safety** (better lighting, clear signage, and security measures).
- **Expanding and maintaining infrastructure** (widening pedestrian paths, fixing uneven surfaces).
- **Separating different usage areas** (designated lanes for pedestrians and cyclists).
- **Adding essential services** (parking, rest areas, water stations).



## Key points from previous meeting

### Key Results

## Environmental impact

- **Reducing environmental impact** (eco-friendly interventions and sustainable development).
- **Raising environmental awareness** (educational programs and community involvement).
- **Expanding green spaces** (widening the park and integrating more natural elements).
- **Enhancing security and cleanliness** (reducing pollution and improving waste management).



# Key points from previous meeting

## Key Results

### Public Space

- **Organizing more events and activities** (cultural programs, art exhibitions, recreational events).
- **Improving safety and infrastructure** (better lighting, emergency access).
- **Enhancing accessibility for cyclists and pedestrians** (connecting neighboring areas).
- **Providing more public amenities** (toilets, picnic areas, drinking water stations).

### Enhancements for Public Space

#### Public Amenities

Providing essential facilities like toilets and drinking water



#### Events and Activities

Organizing cultural and recreational events to engage the community



#### Accessibility

Connecting areas to facilitate easy movement for all



#### Safety and Infrastructure

Upgrading lighting and emergency access for better security



# Outline

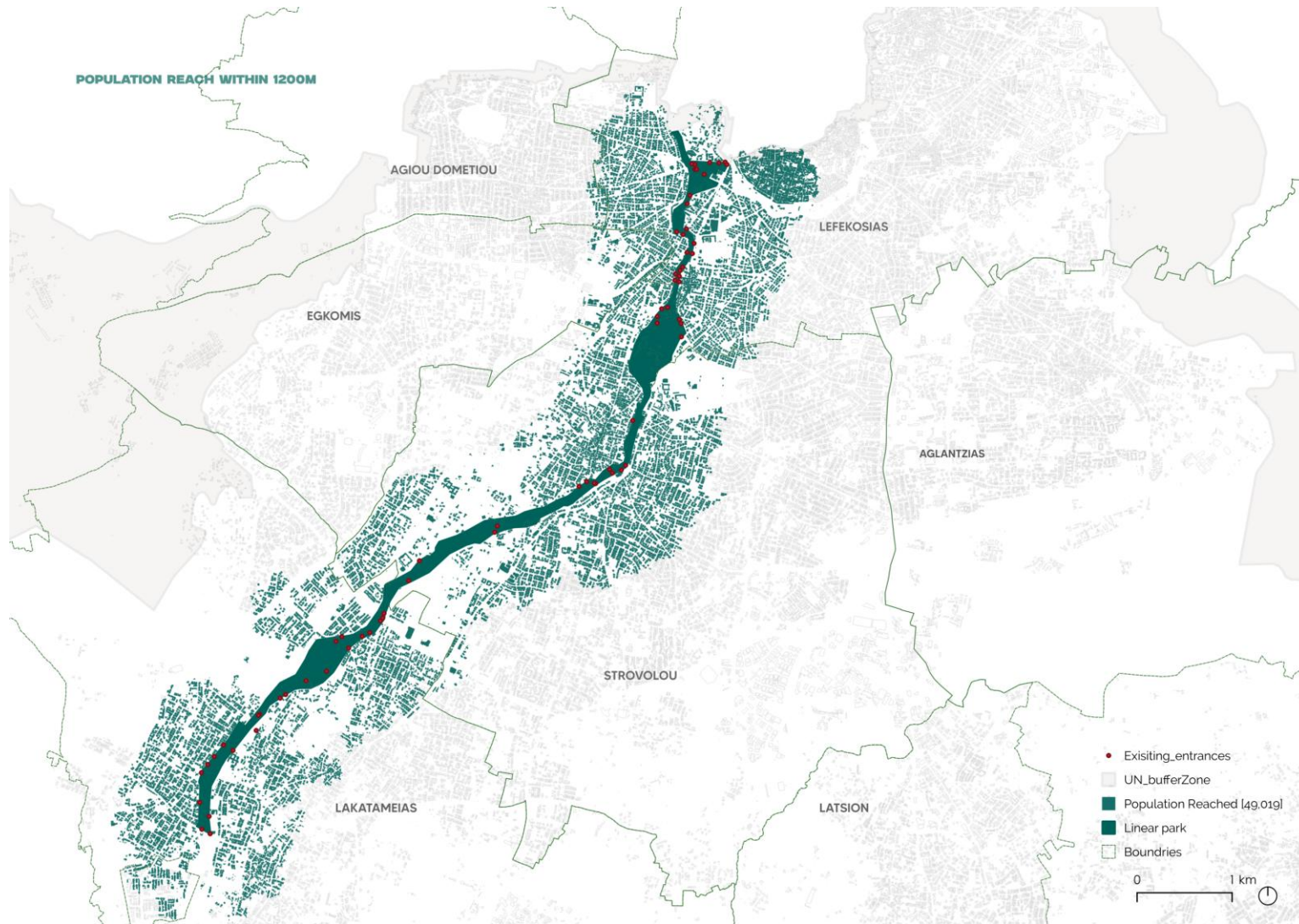
- **Existing situation:**
  - Population reach
  - Accessibility from the park to amenities
  - Accessibility within the park to amenities
  
- **Masterplan Assessment**
  - Accessibility by bus stops and public transport
  - Accessibility from the park to amenities
  - Accessibility within the park to amenities
  
- **Comparing situation**
  - Population reach
  - Density reach
  - Accessibility

assessment  
of the  
existing

surf

society and  
urban form  
research  
lab

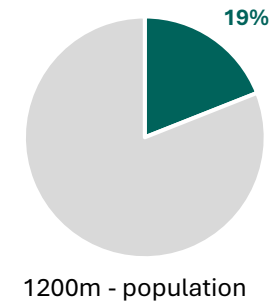
# Existing situation



Linear parks serve as crucial urban elements in Nicosia, enhancing accessibility, promoting sustainability, and improving quality of life. This study evaluates the current state of a 9.5 km-long, 1.3 km<sup>2</sup> linear park and assesses the impact of a proposed masterplan on accessibility, population reach, and amenity distribution. The objective is to determine how the planned interventions enhance user experience and optimize urban connectivity.

The linear park has **67 existing entrances** the covers over **9.5 km** long and **1.3 Km<sup>2</sup>** area facilitating accessibility to a significant number of residents. The population within different accessibility radii is as follows:

- 400-meter radius: 13,793
- 800-meter radius: 20,504
- 1200-meter radius : 49,019 (19%)



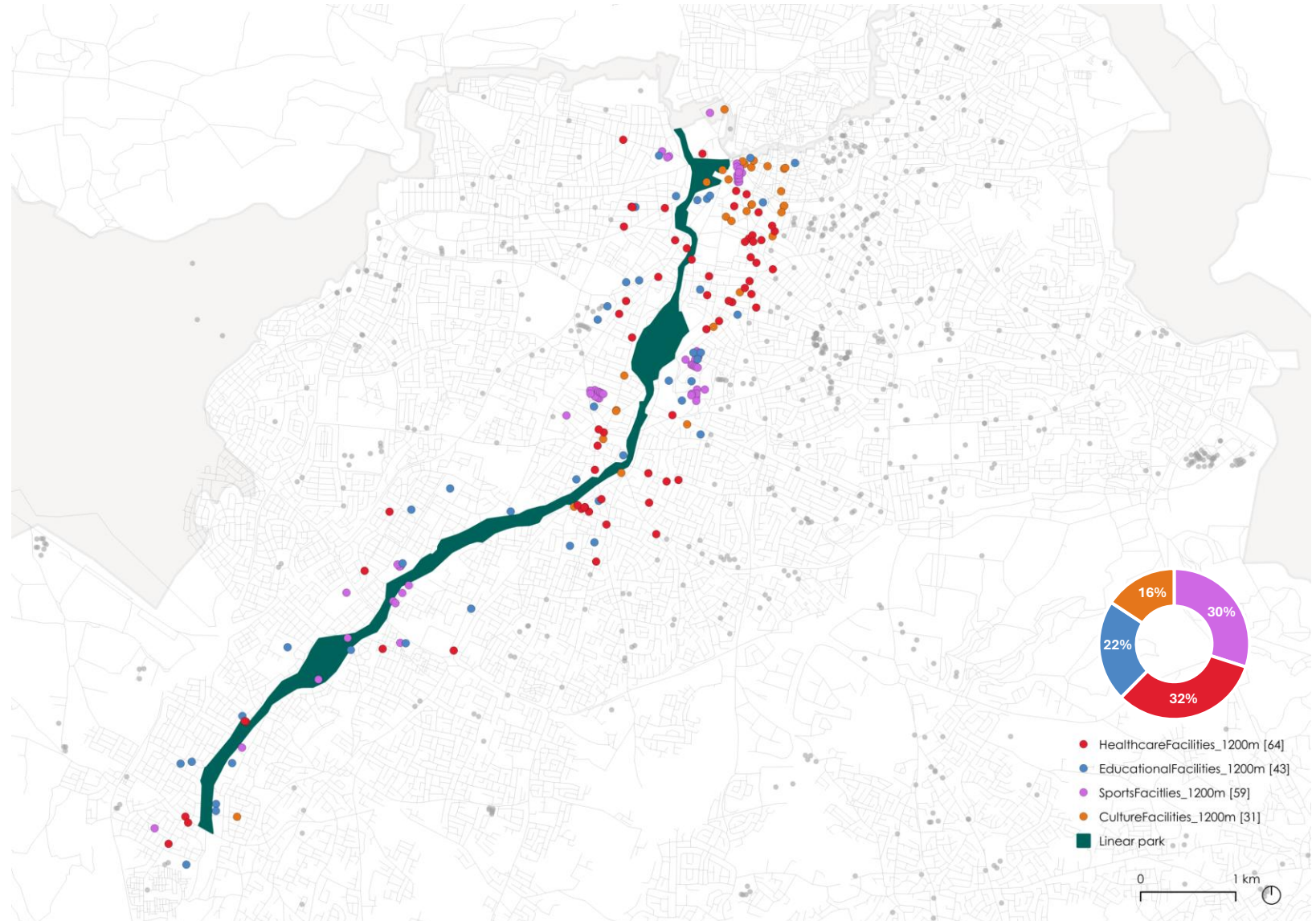
# Existing situation

## Accessibility to amenities **from** the linear park

From the official entrance of the linear park, within 1200-meter walking distance, you can reach:

- 64 Healthcare Facility
- 43 Educational Facility
- 59 Sports Facility
- 31 Culture Facility

While these numbers reflect a relatively high level of accessibility, disparities exist in terms of uniform distribution across the park.



# Existing situation

## Accessibility to amenities **within** the linear park

From the official entrance of the linear park, within 1200-meter walking distance, you can reach:  
Amenities within the linear park has 5 categories:

### Social facilities [32]

- Seating areas
- Kids playgrounds
- Plazas
- Fountain seating

### Sports facilities [11]

- Playgrounds
- Dog park
- Skate park
- GYM

### Animal facilities [7]

- Amateur kitten keep
- Bird cage

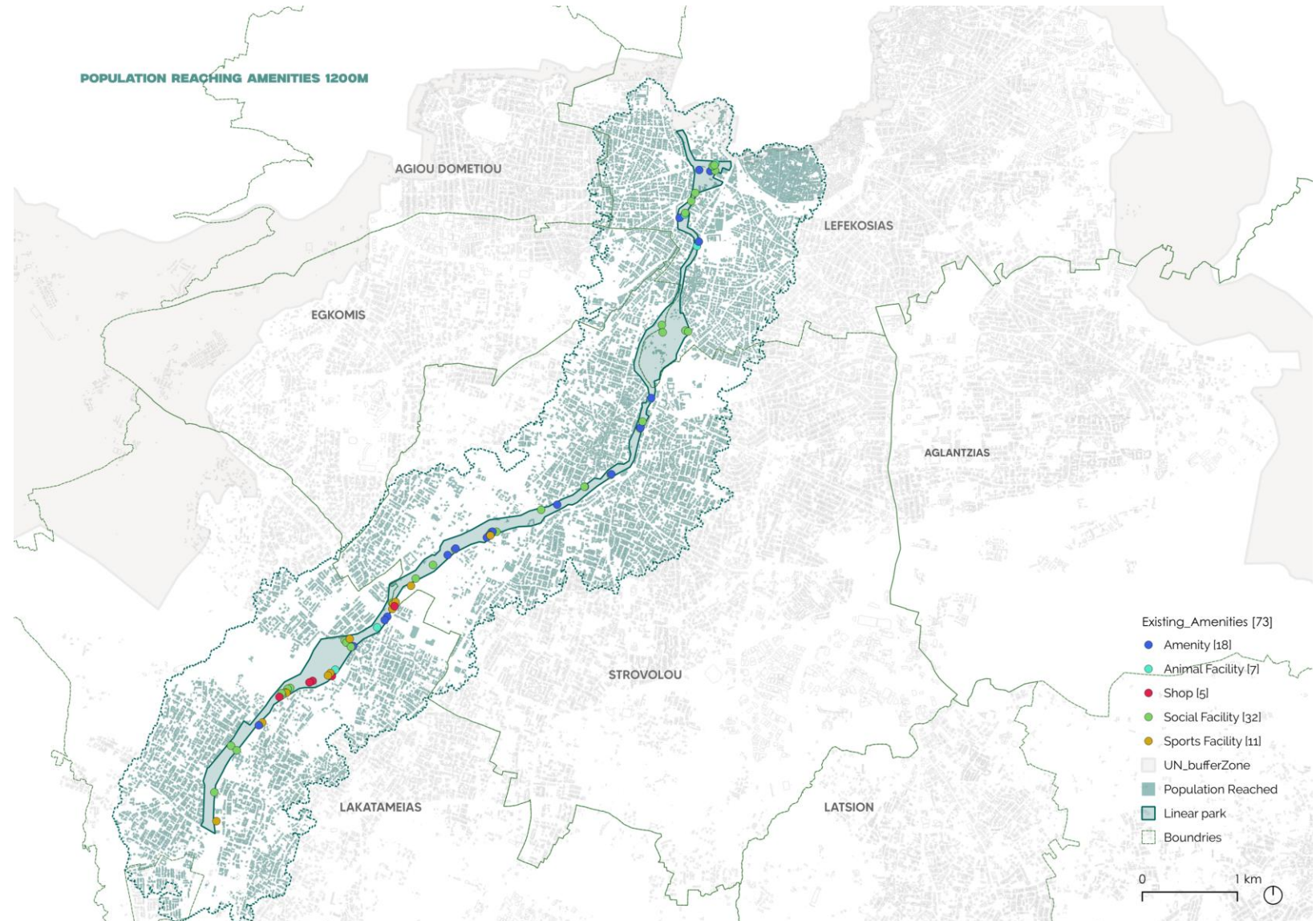
### Commercial facilities [5]

- Cafes and restaurants

### Amenities [18]

- Rest rooms
- Drinking water drops
- Elevators

**Note:** most of the sports and commercial facilities is the one already presented by the masterplan and it was implemented.



# masterplan assessment

surf

society and  
urban form  
research  
lab

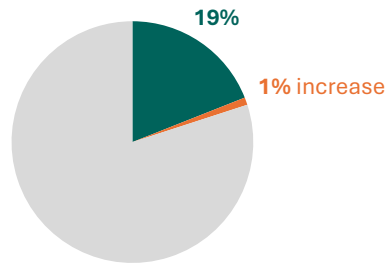
# Comparing situation

The masterplan contains better connectivity and increasing accessibility to more residence. Measuring the amount reached within 1200 meter in both the existing and the masterplan.

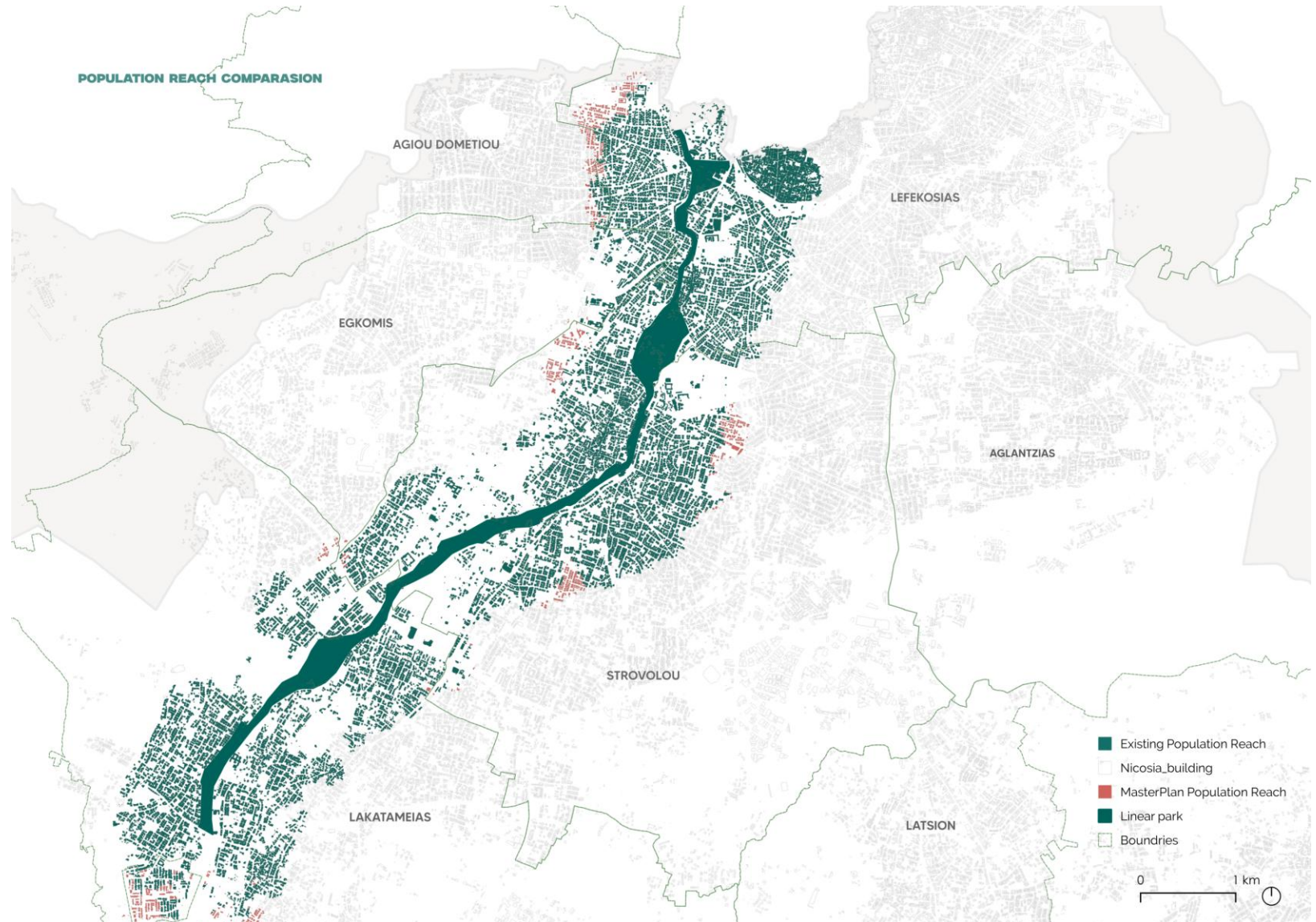
**The reached population is increasing in from 19% to 20%, that improve slightly the accessibility to the linear park .**

Population within 1200 meters

- Existing: 49,019 (19%)
- Masterplan: 51,236 (20%)



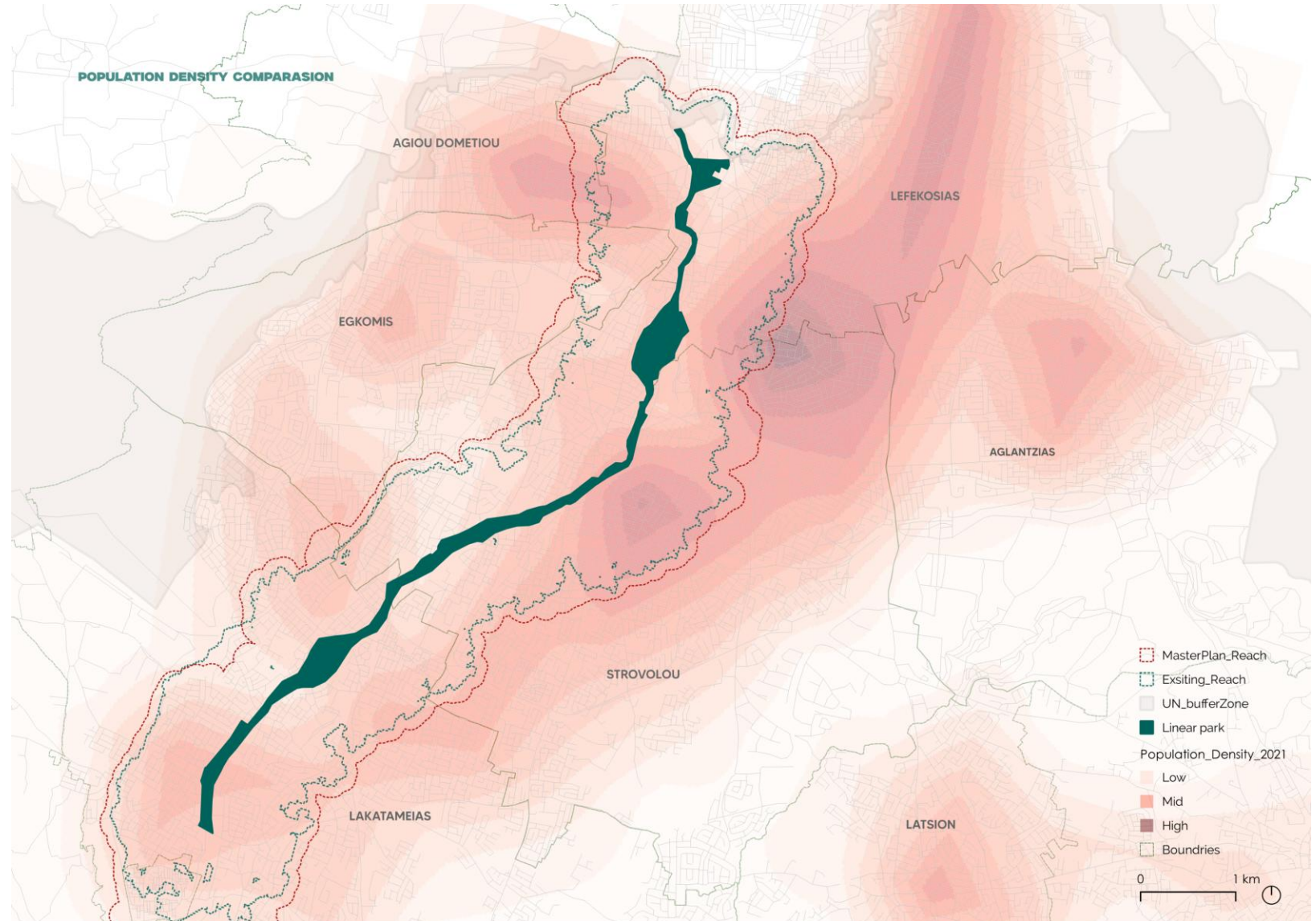
1200m - population



## Comparing situation

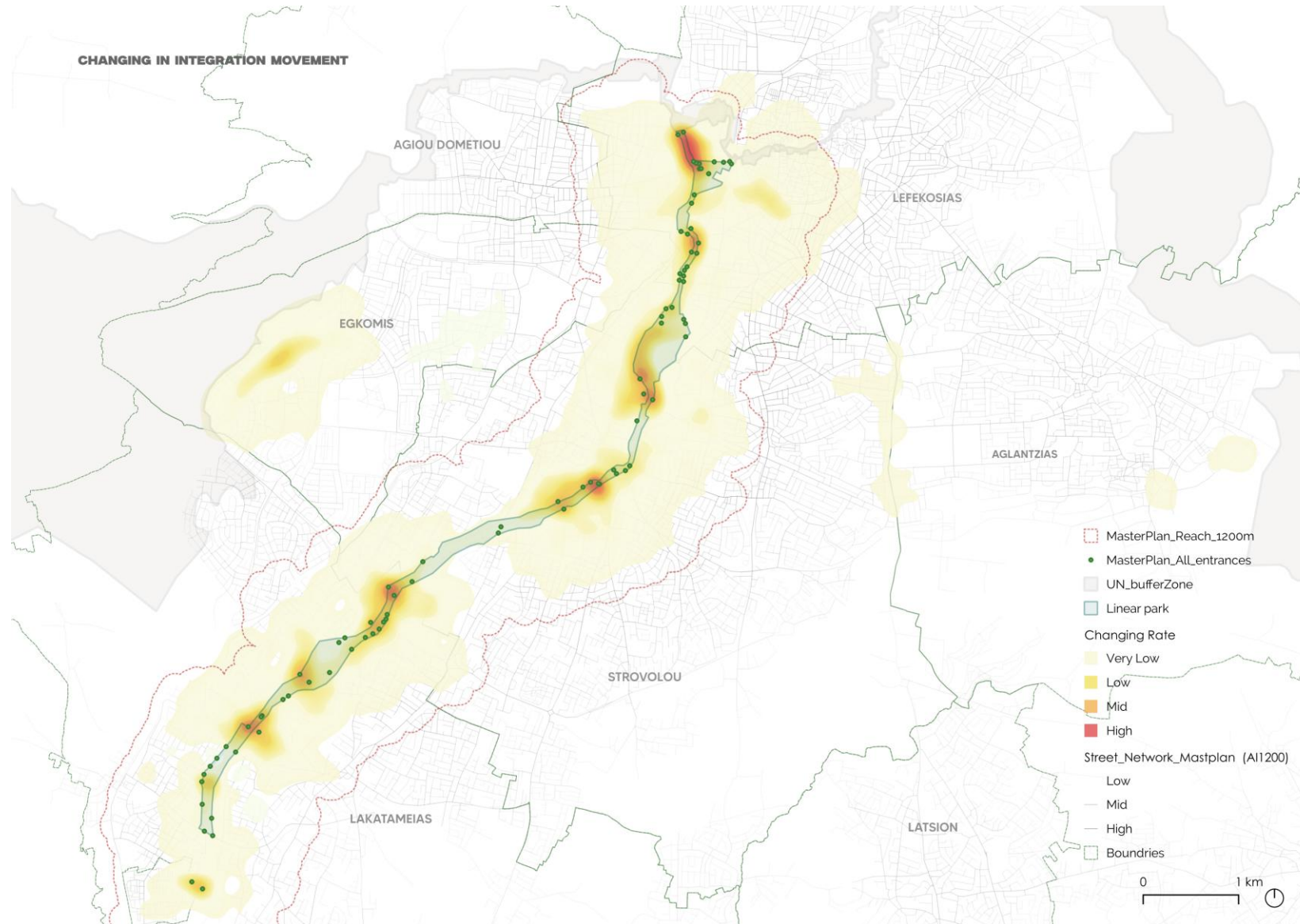
When comparing population density and accessibility between the linear park and the masterplan, it is clear that the increase in accessible areas is quite small and affects only a limited population.

Additionally, **the areas with the highest population density show the least improvement in accessibility.**



# Comparing situation

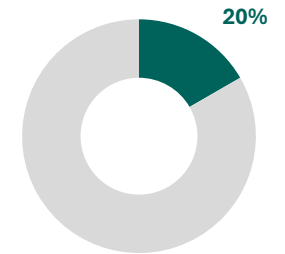
What the new entrances and bridges do to connectivity and accessibility



## Connectivity assessment – urban centrality

### How close to everyone

- Increase accessibility and continuity inclusive to all possible users
- Increase Entrances

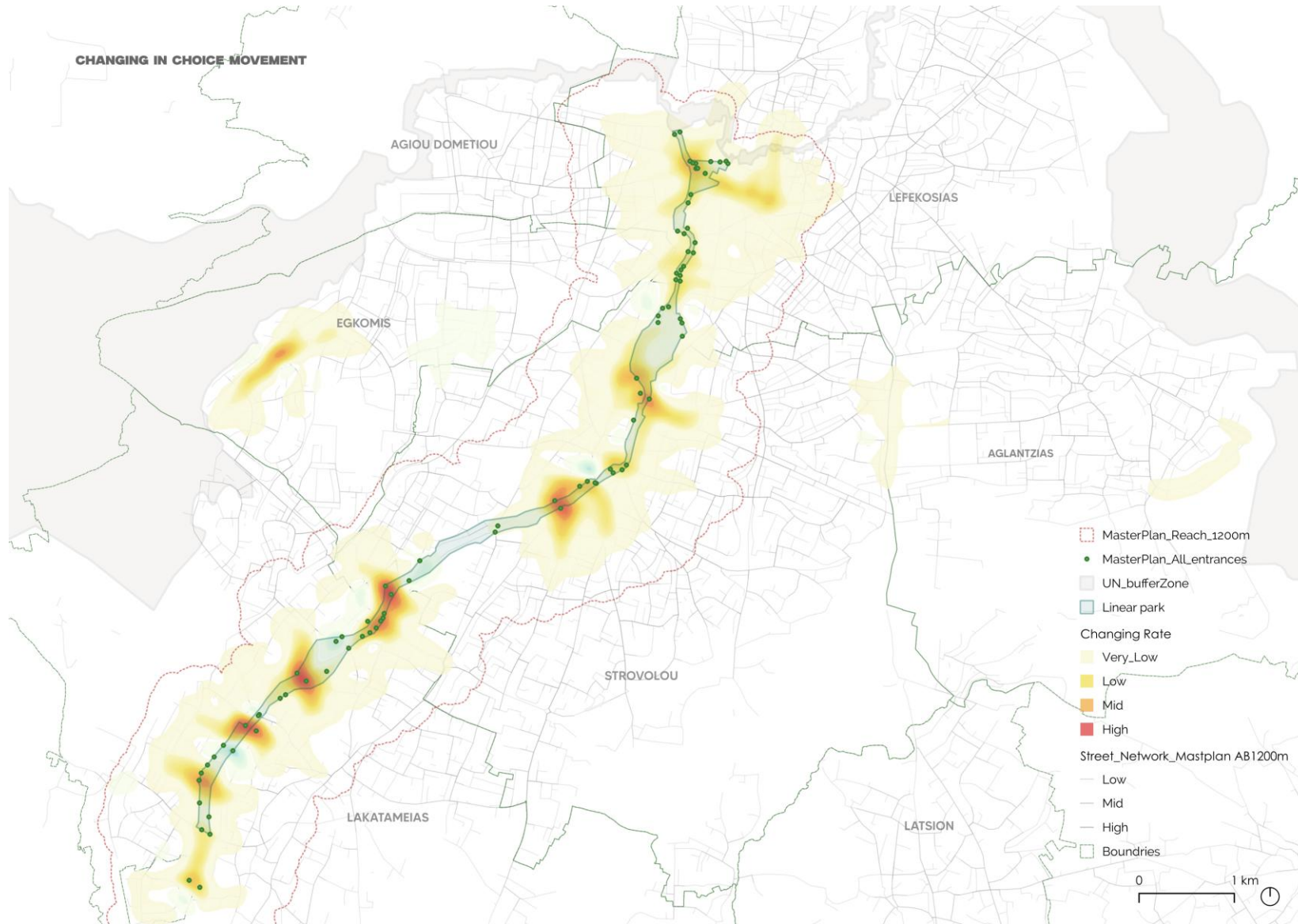


Masterplan increases entrances by 20%

**The masterplan's Entrances and bridges have a small effect in making the linear park much closer to everyone.**

# Comparing situation

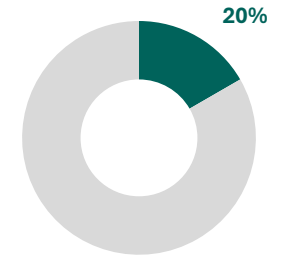
What the new entrances and bridges do to connectivity and accessibility



## Connectivity assessment – Road Hierarchy

How short a path it is to make you pass through the linear park

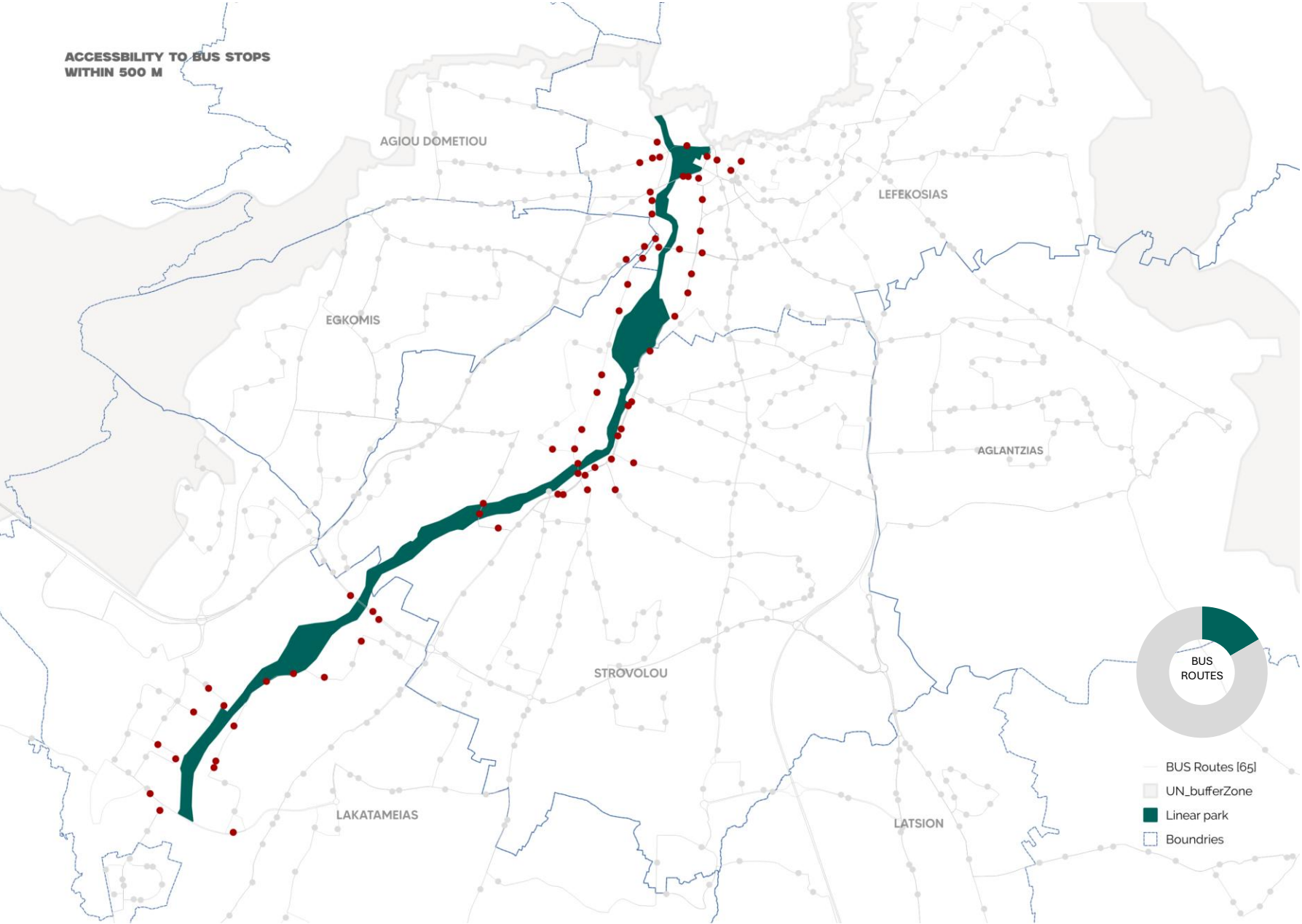
- Increase accessibility and continuity inclusive to all possible users
- Increase Entrances



Masterplan increases entrances by 20%

**The masterplan's Entrances and bridges have a small effect in making the linear park much shorter to pass by /through for everyone.**

# Masterplan situation



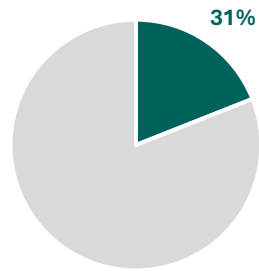
Public transportation is essential for park accessibility. Under the masterplan: The population that can reach the bus stops that are within 500-meter walking from any entrance is

- Number of bus stops: 70

# Masterplan Assessment

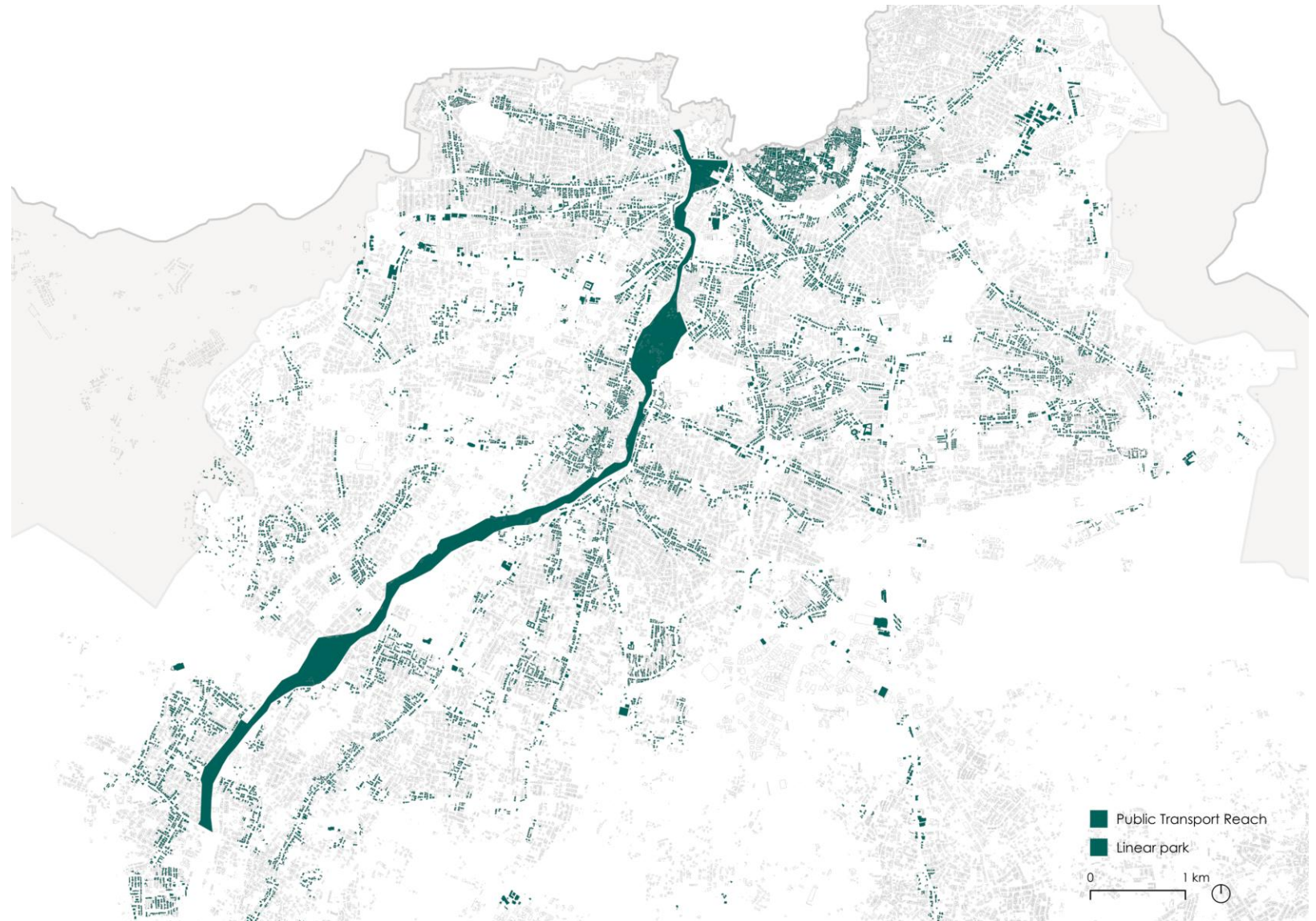
The population that can reach a bus stop within 200 meters and then access the park within 500 meters of another stop.

- Number of population: 80,797 (31%)



Population reach by public transportation

**Public transport increases the accessibility to the population**



# Masterplan Assessment

## Accessibility to amenities **from** the linear park

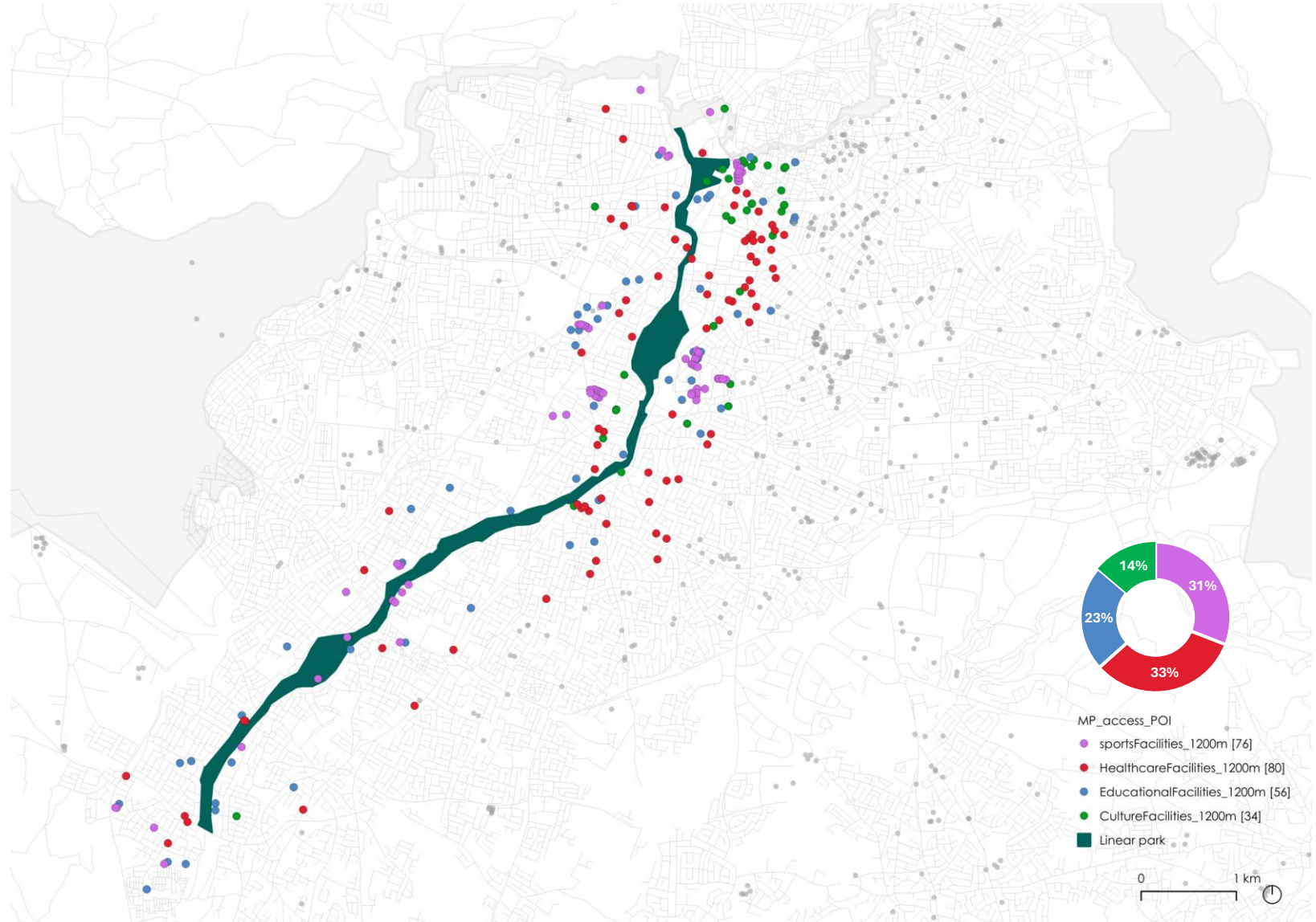
From the official entrance of the linear park, within 1200-meter walking distance, you can reach:

- 80 Healthcare Facility
- 56 Educational Facility
- 76 Sports Facility
- 34 Culture Facility

That is considered increasing in accessibility to amenities from the linear park compared to the existing situation.

### Existing

- 64 Healthcare Facility
- 43 Educational Facility
- 59 Sports Facility
- 31 Culture Facility



# Masterplan Assessment

## Accessibility to amenities **within** the linear park

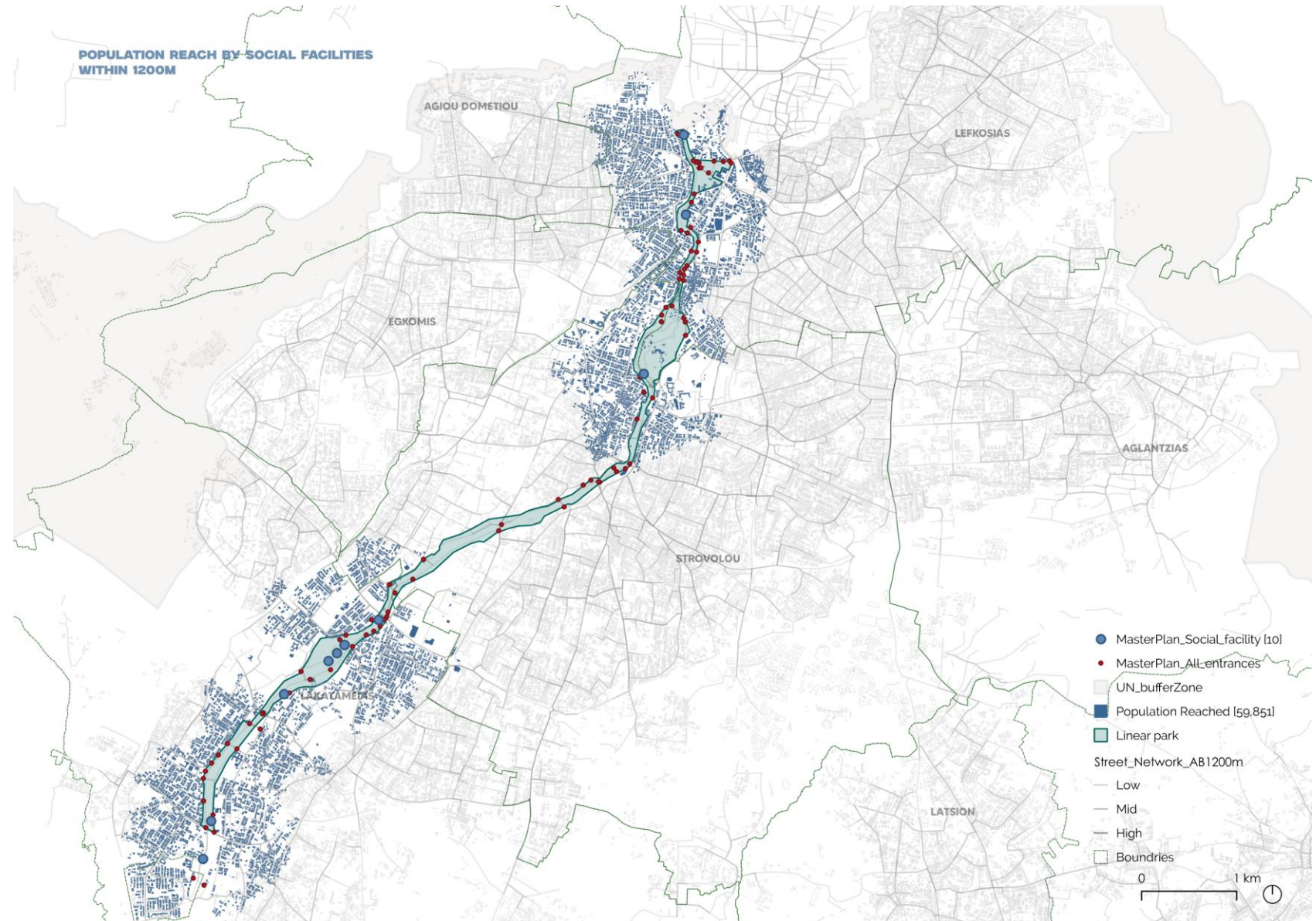
The social facilities are covering the north and south parts of the linear park, with a noticed gap in the middle. The overall population reached with 1200-meter walking distance is.

In terms of the relationship to the street network. The entrances that are the closest to the social facilities are close to some streets that have high to mid betweenness centrality across the city. However, the middle area has also some streets with high betweenness centrality but there is no existence to social facilities in that area.

### Social facilities covers [10]:

- Art installation
- Nature playground
- Kids playgrounds
- Seating areas

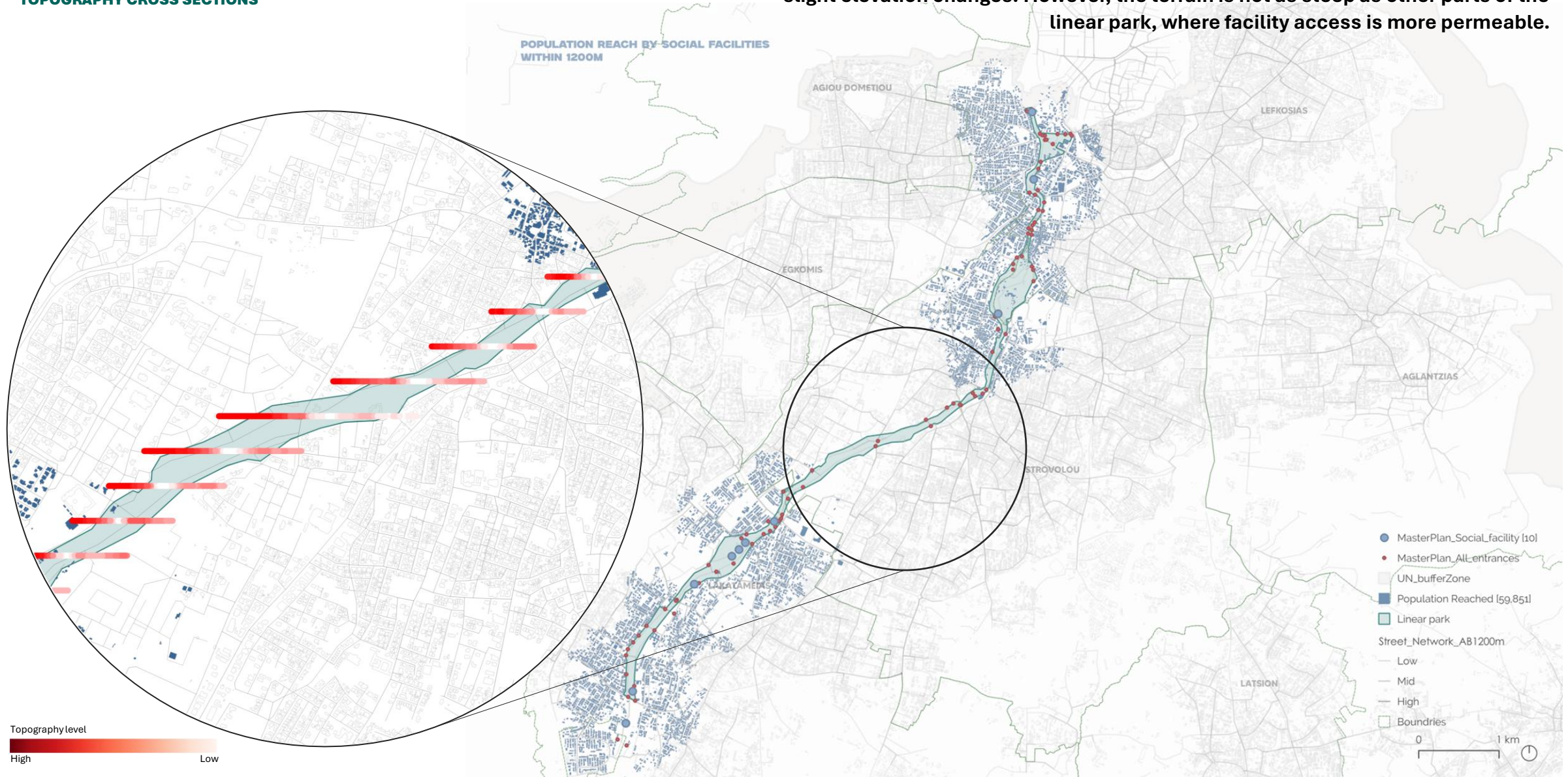
**Social facilities are not well distributed, especially in the middle areas (e.g., Strovolos)**



# Masterplan Assessment

## TOPOGRAPHY CROSS SECTIONS

Topography cross-section of the most underserved area in the masterplan, showing slight elevation changes. However, the terrain is not as steep as other parts of the linear park, where facility access is more permeable.



# Masterplan Assessment

## Accessibility to amenities **within** the linear park

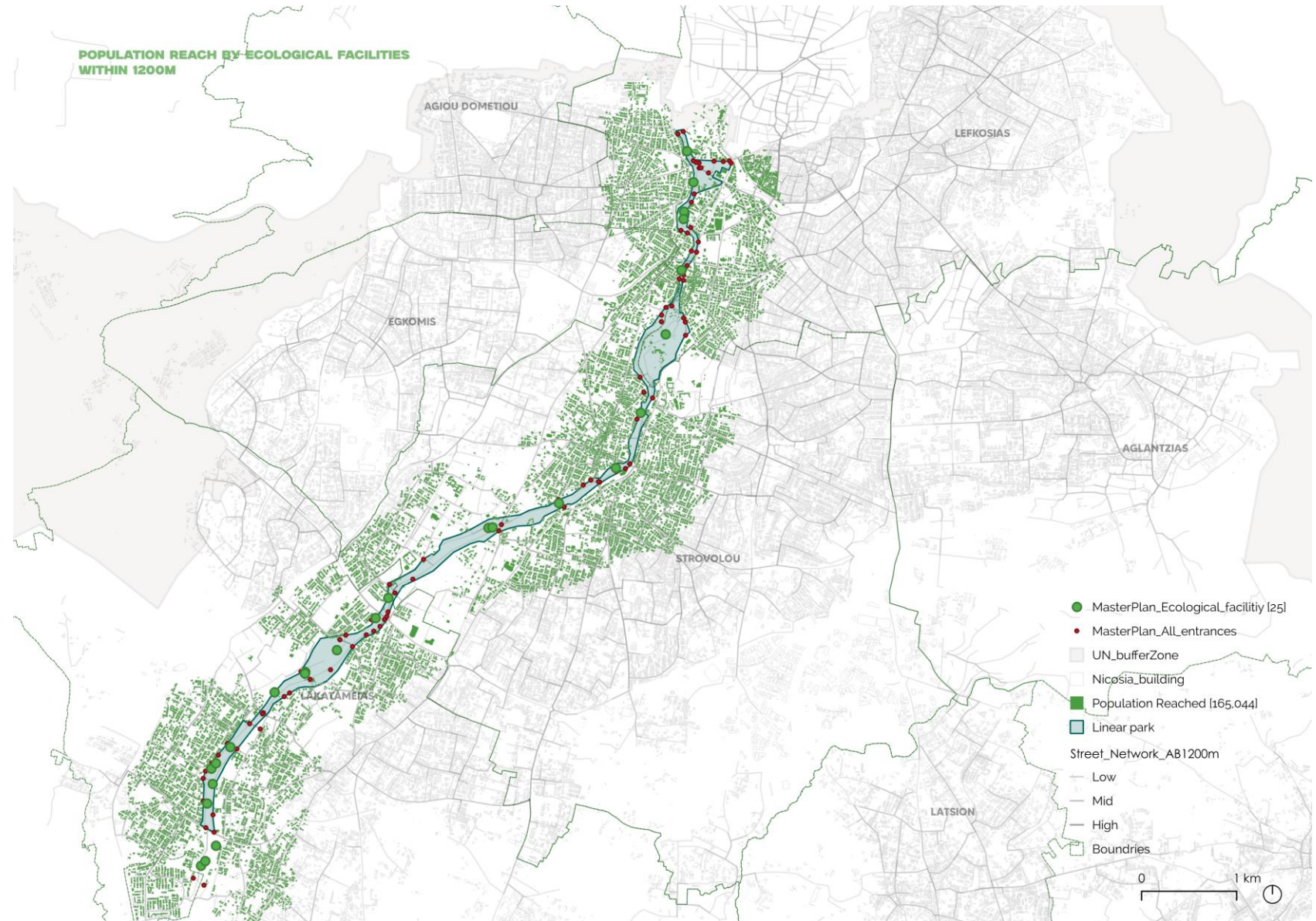
The ecological facilities are well distributed across the linear park. It covers almost all the areas and close to most of the entrances. The overall population reached with 1200-meter walking distance is 49,019 .

In terms of the relationship to the street network. It is considered accessible as it is well distributed to high and mid streets with betweenness centrality. Also, comparing the existing situations these facilities are considered a strong addition with an environmental impact values to the park and the society.

### Ecological facilities [25] covers:

- Boosting biodiversity
- Therapeutic garden
- Ecological practices
- Bees & flies
- Environmental centers
- Ecological practices cultivation

## Ecological facilities are accessible and well-distributed along the linear park



# Masterplan Assessment

## Accessibility to amenities **within** the linear park

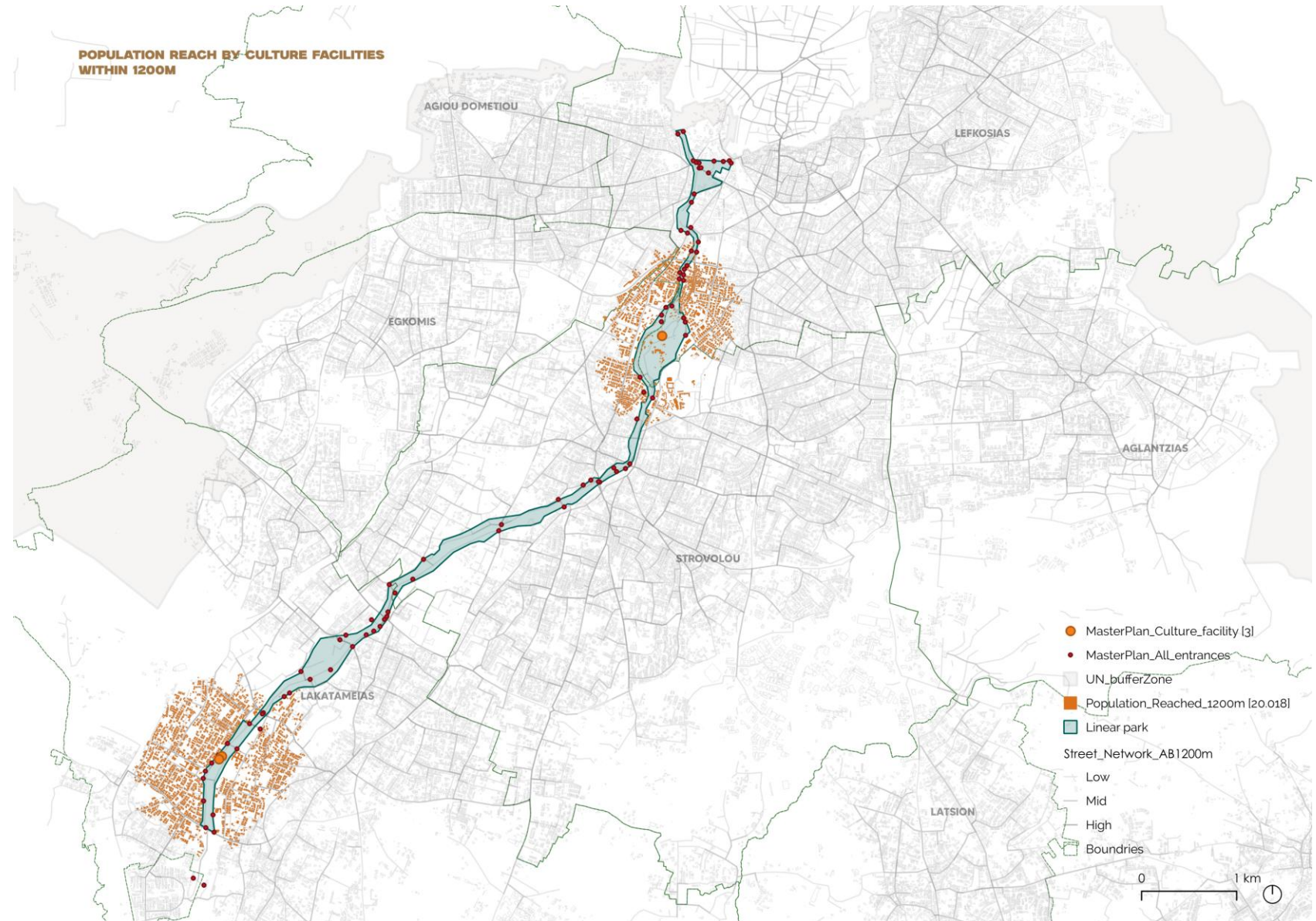
The culture facilities are covering part of the north and south parts of the linear park, with a noticed gap in the middle. And there is an over served area in the south part as it has two services points close to each other. The overall population reached with 1200-meter walking distance is 20,018.

In terms of the relationship to the street network. The entrances that are the closest to the culture facilities are not that close to some streets that have high to mid betweenness. However, the connectivity and accessibility to these facilities will not be considered as a highly accessible. Also the middle area has also some streets with high betweenness centrality but there is no existence to culture facilities in that area.

**Culture facilities** covers [3]:

- Outdoor amphitheater
- Museums

**Cultural facilities are not well distributed, especially in the middle areas (e.g., Strovolos)**



# Masterplan Assessment

## Accessibility to amenities **within** the linear park

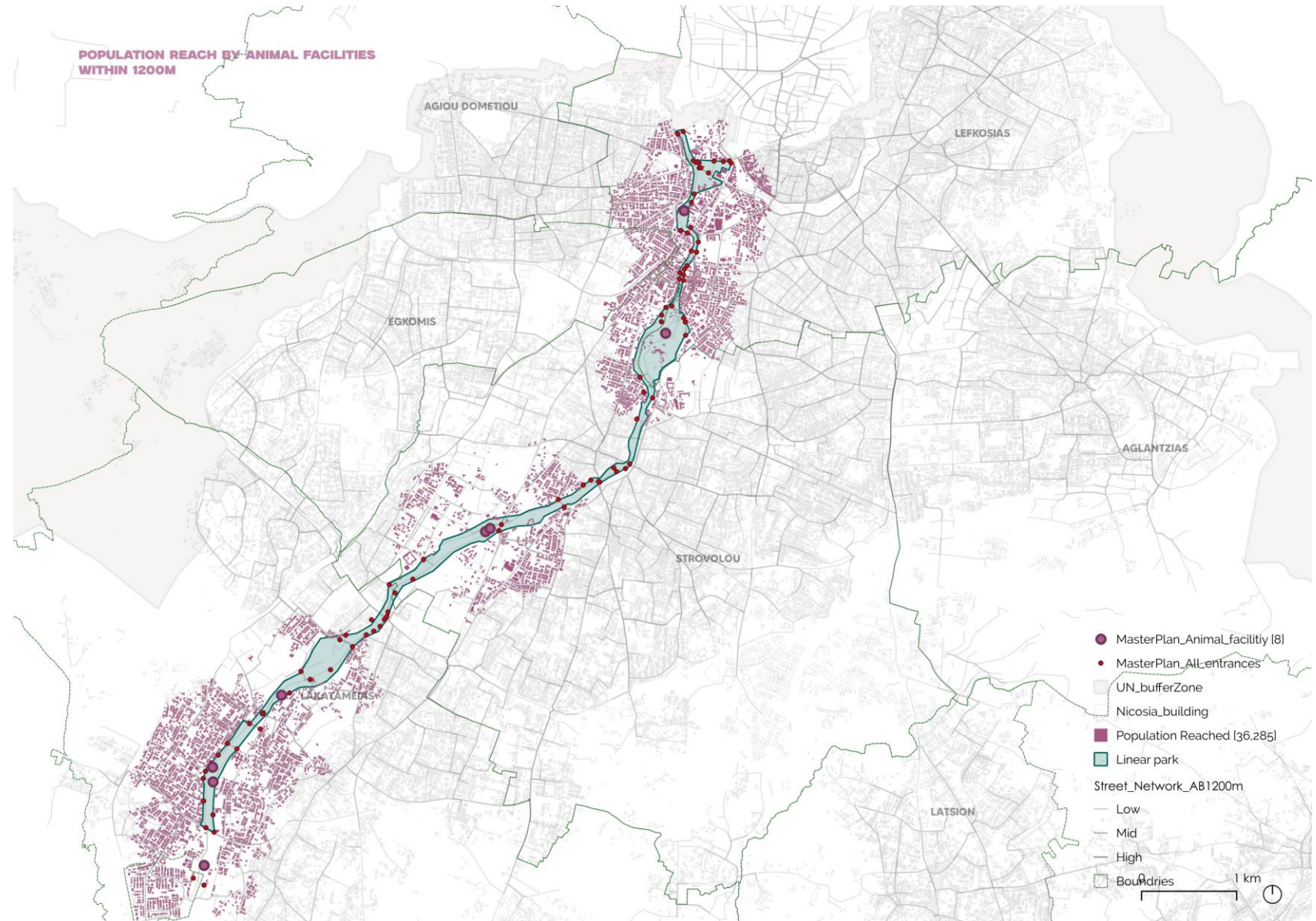
The animal facilities are covering the linear park in quite balanced zones, however, there are areas that exceed 1200-meters within the linear park with no animal facilities. The overall population reached with 1200-meter walking distance is 36,285.

In terms of the relationship to the street network. Zones in the north and south parts of the linear park are close to entrances that is lay on mid to high streets with betweenness centrality. However, the middle zone is considered not as accessible as it is not walkable close to one of the high betweenness streets.

**Animal facilities** covers [8]:

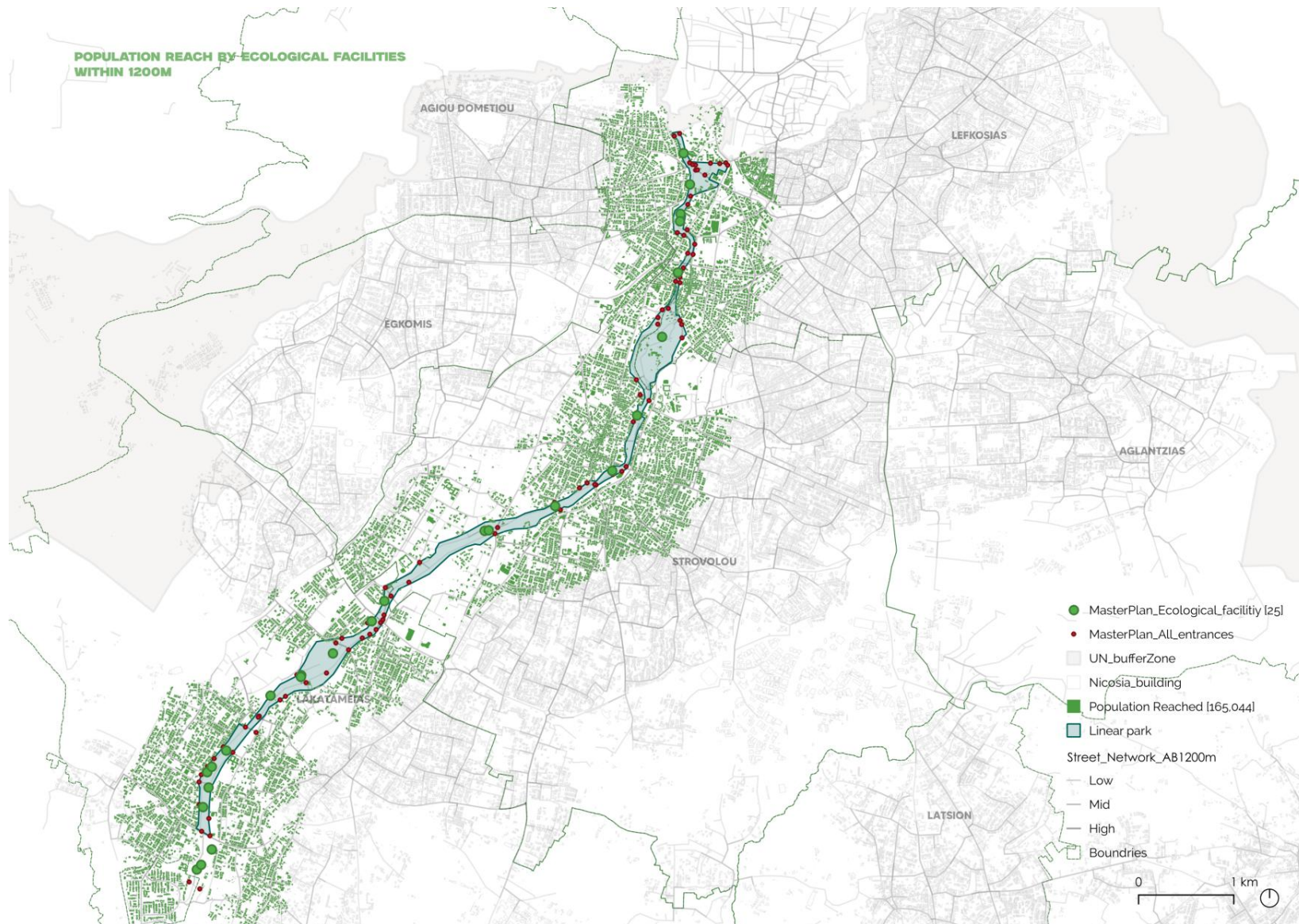
- Bees & butterflies
- Dog parks

**Animal facilities are considered well-distributed, however, there are some gaps in the middle**



**For Prioritization**

# For Prioritization



## Environment - Biodiversity

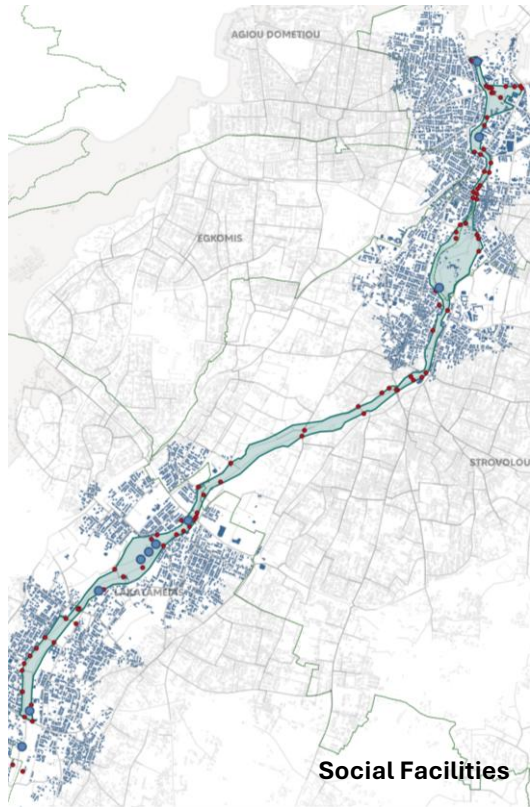
- Environmental footprint
- Green Expansion
- Raise Awareness

- **There was no consideration of biodiversity dimensions in the existing situation.**
- **The masterplan offers well-distributed ecological facilities**

Not a priority

# For Prioritization

Public spaces - Activities



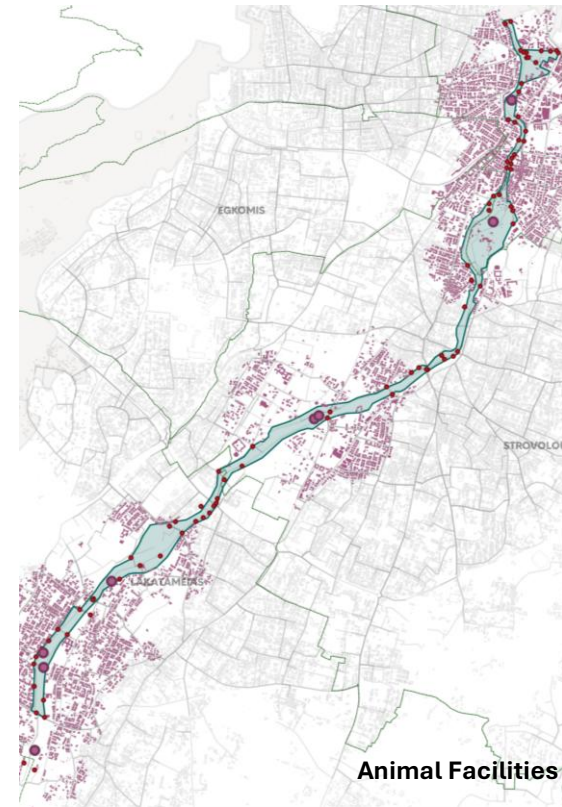
**Places for different ageing groups**

Need increasing – equal distribution



**Creating Destinations (culture facilities)**

Need increasing



**Access to amenities within the park**

Need increasing – redistribute

# Conclusion

## •Existing Strengths of Pedieos Linear Park:

- Serves as a key urban space enhancing accessibility, sustainability, and quality of life.
- Covers a significant area with multiple access points, reaching a large number of residents.
- Provides various amenities, including social, sports, cultural, and ecological facilities.

## •Improvements Introduced by the Masterplan:

- Enhances connectivity and slightly increases the population within the 1200-meter accessibility range **from 19% to 20%**.
- Expand access to **public transportation**, allowing **31% of the population** to reach the park via nearby bus stops.
- **Increases** the number of accessible healthcare, educational, sports, and cultural facilities within walking distance.
- **Improve** serving amenities within the linear park (Ecological, social, cultural, animal)

## •Challenges and Areas for Further Improvement:

- The accessibility improvements are relatively minor, with only a **1% increase** in population reach.
- **High-density areas** experience **the least benefit**, indicating a need for better-targeted interventions.
- The **middle** section of the park remains **underserved**, with gaps in social, cultural, and animal-related facilities.

## •Recommendations for Future Enhancements:

- **Strengthen connectivity by optimizing entrance locations** and linking them to high-betweenness streets.
- Address accessibility disparities by **ensuring uniform distribution** of amenities across the park.
- Introduce **additional social and cultural facilities in underserved areas** to improve the park's functionality and inclusivity.

The masterplan represents a step forward in improving Pedieos Linear Park's accessibility and functionality. However, **further refinements are necessary to maximize its impact** and create a more equitable and well-connected urban space for all residents.